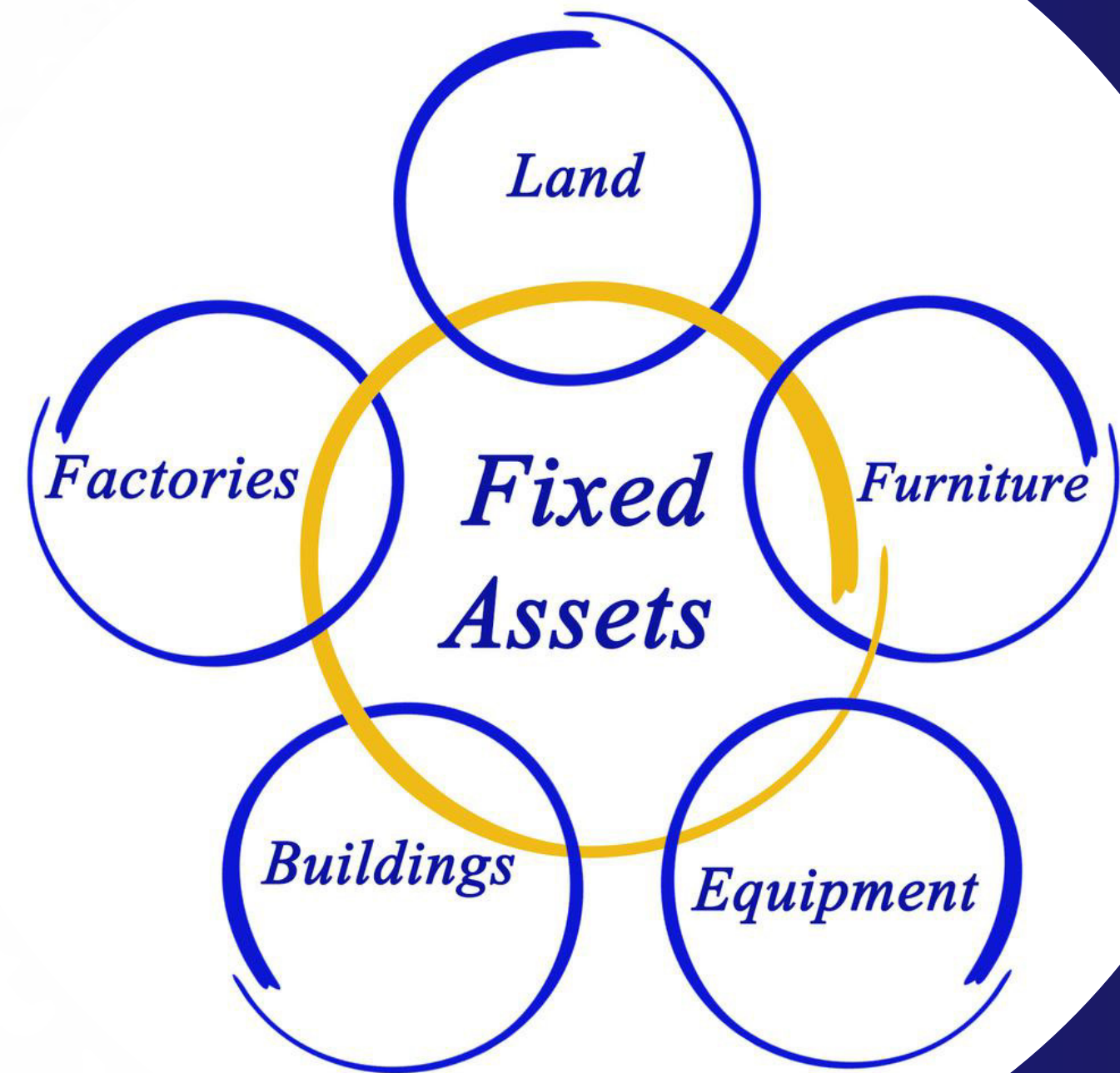


FIXED ASSETS MANAGEMENT



OVERVIEW

Streamline Your Asset Management

Fully integrated with Sage 200 Evolution, this comprehensive solution simplifies asset management by offering a range of powerful functionalities.

Whether managing depreciation, tracking transactions, or generating reports, this module helps you efficiently control and monitor your company's fixed assets.

The module is designed to handle all stages of an asset's lifecycle, ensuring that your asset management is accurate, efficient, and compliant.



KEY FUNCTIONALITIES

Effortless Asset Tracking & Management

- **Track Fixed Assets with Ease**
 - Monitor and manage all assets from a central platform, ensuring up-to-date records at all times.
- **Add Transactions Seamlessly**

Record essential asset transactions such as:

 - Cost: Track acquisition costs and any cost-related changes.
 - Depreciation: Automate depreciation calculation based on pre-configured methods.
 - Impairment: Adjust asset values based on unforeseen circumstances.
 - Revaluation: Easily revalue assets for financial reporting.



STREAMLINED DEPRECIATION & TRANSACTIONS

Maximize Efficiency with Bulk Depreciation and Transactions

- **Separate Book and Tax Depreciation**

Handle separate depreciation and transaction tracking for both accounting and tax purposes on the same asset.

- **Batch Depreciation for Multiple Assets**

Run depreciation batches across multiple assets simultaneously to save time and ensure consistency.

- **Full Review of GL Transactions**

Ensure accuracy by fully reviewing general ledger (GL) transactions before posting them.

- **Post and Revert Transactions**

Post calculated depreciation and other transactions to the integrated system (e.g., Sage 200 Evolution). If needed, easily revert transactions and depreciation, whether for a single asset or a batch.



ASSET LIFECYCLE MANAGEMENT

Comprehensive Control Over Your Asset Lifecycle

- **Sell or Scrap Assets**

Manage asset disposal processes, whether selling or scrapping, ensuring your asset records remain up-to-date.

- **One-Click Asset Creation**

Automatically create assets after purchase with a simple, one-click process.

- **Configurable Master Data**

Customize asset management to suit your needs by configuring:

- Asset types
- Transaction types
- Sub-transaction types
- Depreciation methods
- GL accounts, cost centers, locations, and more.





COMPUSOFT

ADVANCED FEATURES

Enhance Efficiency with Advanced Module Features

- **Web-Based Access**

Access the Fixed Assets Module via Asamco's portal or your own, offering flexibility and convenience for your team.

- **User-Defined Fields**

Customize fields according to your unique asset management needs.

- **Ticketing, DMS, and Commenting**

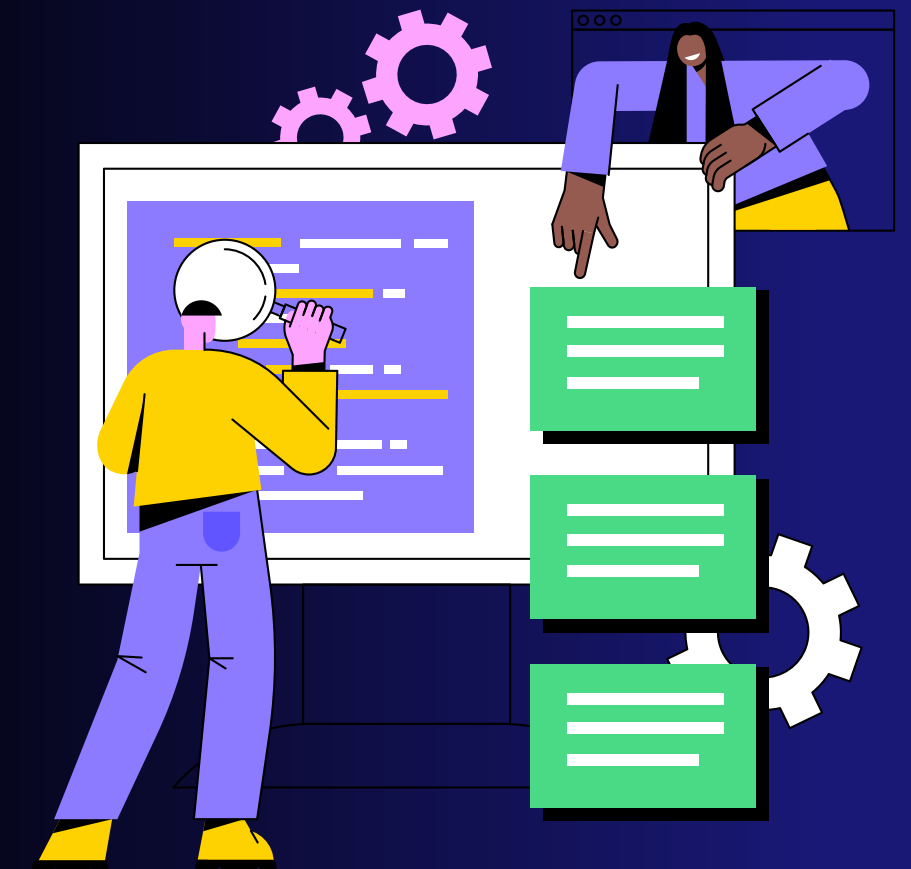
Manage assets with a built-in ticketing system, document management system (DMS), and the ability to add comments for detailed asset history.

- **Customizable Reporting**

Generate reports tailored to your requirements, providing deep insights into your asset management.

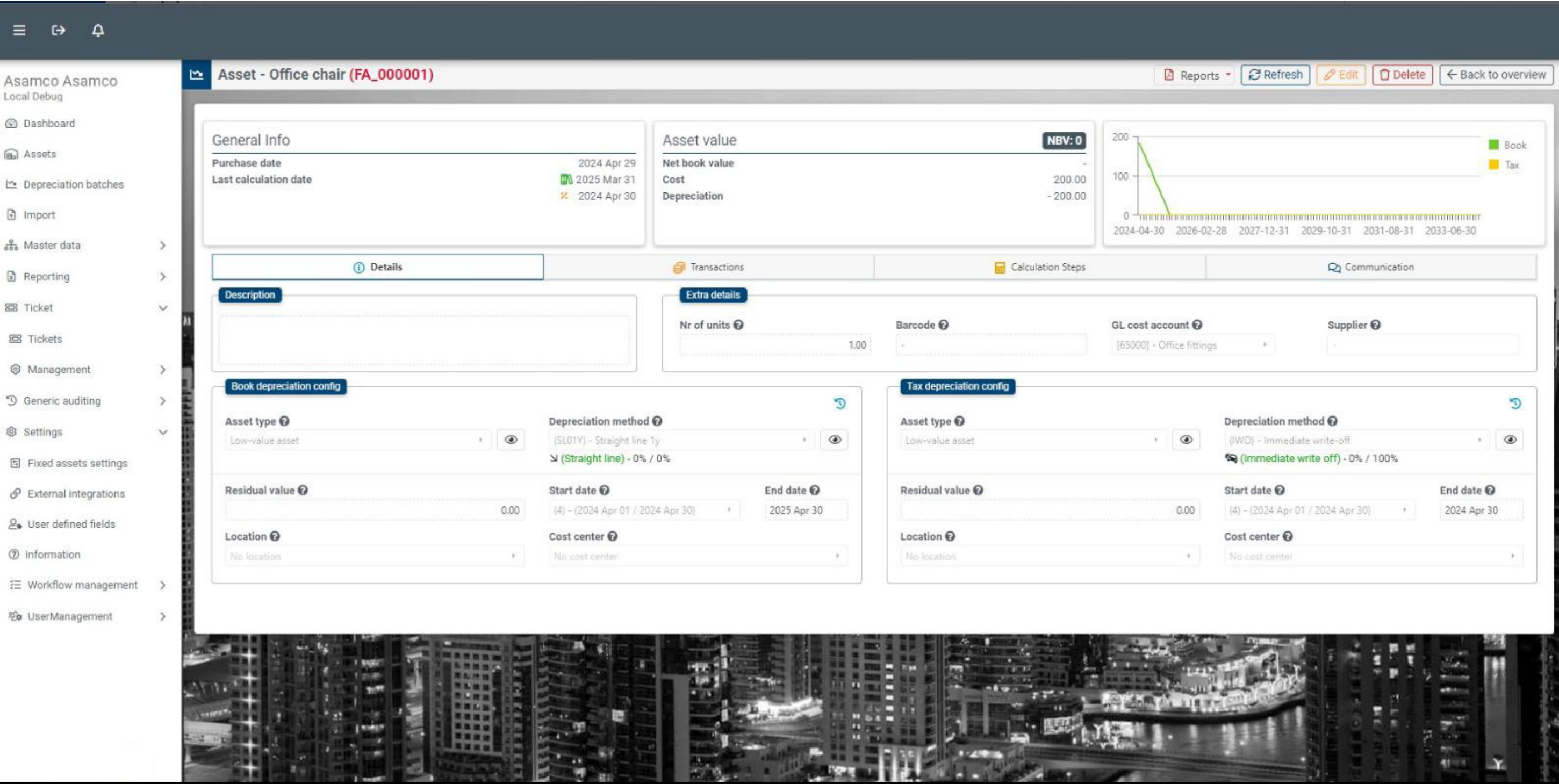
- **Audit Log**

Keep a complete and customizable audit trail of all asset-related activities, enhancing accountability and control.



DASHBOARDS/SCREENS

Asset Overview



Asset Types Overview



Asamco Asamco

Local Debug

Dashboard

Assets

Depreciation batches

Import

Master data

Asset types

Transaction types

Sub transaction types

Depreciation methods

Depreciation types

Periods

General ledger accounts

Cost centers

Locations

Reporting

Ticket

Tickets

Management

Generic auditing

Settings

Fixed assets settings

Asset types

+ New

↺

📄

📄

⚠

⋮

Search...

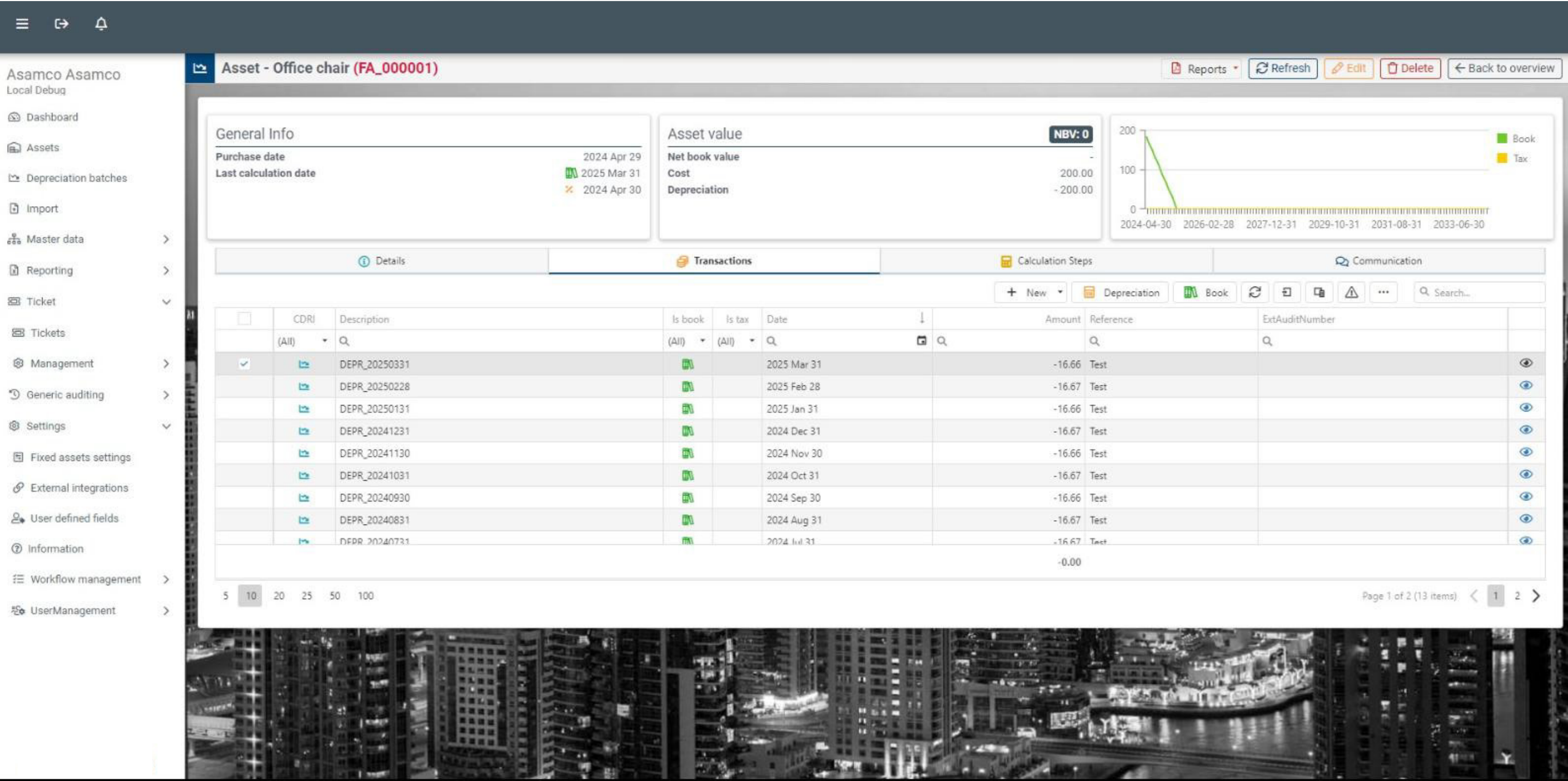
Code	Description	Active	Cost account	Accumulated depreciation account	Depreciation expense account	Depreciation method	Depreciation type	
LA0	Land 0%	✓	[Cost] FA - Cost	[Cost] FA - Cost	[Cost] FA - Cost	Reducing balance - 30%	Reducing balance	🔧🗑
BU20	Building 20Y	✓	[Cost] FA - Cost	[Cost] FA - Cost	[Cost] FA - Cost	Straight line 20y	Straight line	🔧🗑
LEAI	Leasehold improvements 10Y	✓	[Cost] FA - Cost	[Cost] FA - Cost	[Cost] FA - Cost	Straight line 10y	Straight line	🔧🗑
CH03	Computers & hardware 3Y	✓	[63000] Operating equipment	[63000] Operating equipment	[63000] Operating equipment	Straight line 3y	Straight line	🔧🗑
SO03	Software 3Y	✓	[Cost] FA - Cost	[Cost] FA - Cost	[Cost] FA - Cost	Straight line 3y	Straight line	🔧🗑
VE05	Vehicles 5Y	✓	[Cost] FA - Cost	[Cost] FA - Cost	[Cost] FA - Cost	Straight line 5y	Straight line	🔧🗑
OE05	Office equipment 5Y	✓	[Cost] FA - Cost	[Cost] FA - Cost	[Cost] FA - Cost	Straight line 5y	Straight line	🔧🗑
MA10	Machinery 10Y	✓	[Cost] FA - Cost	[Cost] FA - Cost	[Cost] FA - Cost	Straight line 10y	Straight line	🔧🗑
UC0P	Under construction - 0%	✓	[79500] Prepayments on operat./office equ.	[79500] Prepayments on operat./office equ.	[79500] Prepayments on operat./office equ.	No depr.	0% depreciation	🔧🗑
LVA	Low-value asset	✓	[67000] Low-value assets	[67000] Low-value assets	[67000] Low-value assets	Immediate write-off	Immediate write off	🔧🗑
TEM	Technical equipment and machinery	✓	[79500] Prepayments on operat./office equ.	[79500] Prepayments on operat./office equ.	[79500] Prepayments on operat./office equ.	Straight line 5y	Straight line	🔧🗑
PP	Prepayments	✓	[79500] Prepayments on operat./office equ.	[79500] Prepayments on operat./office equ.	[79500] Prepayments on operat./office equ.	No depr.	0% depreciation	🔧🗑

5 10 20 25 50 100

Page 1 of 1 (12 items) < 1 >

DASHBOARDS/SCREENS

Asset Transactions





Transaction details (FA_000001 - Office chair)

Transaction info

Type ?
Depreciation

Date ?
2025 Mar 31

Amount ?
-16.66

Reference ?
Test

Description ?
DEPR_20250331

Subtype ?
Depreciation

Book/Tax ?

Book

Tax

Contra GL account ?
X-4910 - Manufacturing Varian

Related depreciation batch

Batch type ?
Depreciation

Last batch date ?
2025 Mar 31

Batch status ?
Posted to integration

Related calculation steps

From	To	Cost	Depreciation	Accu. depreciation
2025 Mar 01	2025 Mar 31	200.00	16.66	-183.34

Close

Transaction details (FA_000001 - Office chair)

Transaction info

Type ?

Addition to cost

Date ?

2025 Mar 31

Amount ?

100.00

Reference ?

FA_000001

Description ?

Addition to cost - FA_000001

Subtype ?

Purchase

Book/Tax ?

Book

Tax

Contra GL account ?

67000 - Low-value assets

Related GL lines

Audit nr.	Date	Debit	Credit	GL account
-	2025 Mar 31	100.00	0.00	65000 - Office fittings
-	2025 Mar 31	0.00	100.00	67000 - Low-value assets

Post GL lines to ERP

Close

DASHBOARDS/SCREENS

Calculate Depreciation (depreciation batch)

Asamco Asamco

Local Debug

Dashboard

Assets

Depreciation batches

Import

Master data

Reporting

Ticket

Tickets

Management

Generic auditing

Settings

Fixed assets settings

External integrations

User defined fields

Information

Workflow management

UserManagement

Depreciation batch details

Preview and post GL batch

Cancel batch

Back to overview

Summary

To: 2024 Aug 31

Reference:

Asset filter: AT: LVA CC: None LO: None

Depreciation:

Batch

Calculated transactions

Posted to GL batch

Posted to ERP

View transactions

Search...

Asset code	Asset name	Asset type	Cost	From date	To date	Depreciation	NBV	Last period
670042	conference room speaker	LVA - Low-value asset	355.46	2023 Jun 01	2023 Jun 30	355.46	355.46	
						Sum: 355.46		

5 10 20 25 50 100

Page 1 of 1 (1 items)

1

DASHBOARDS/SCREENS

Reports



Asamco Asamco
Local Debug

Dashboard

Assets

Depreciation batches

Import

Master data

Reporting

Dashboard

Reports

Datareaders

Datasources

Reports

Notifications

Reporting settings

FTP Servers

Ticket

Generic auditing

Settings

Reports

Manage categories

Checkup

Select actions

Import reports

<input type="checkbox"/>	Name	Description	Datasource	Category	Type	
<input type="checkbox"/>	Fixed asset listing	Fixed asset listing	Fixed asset listing	Asset	BIC	<div><div></div><div></div><div></div><div></div></div>
<input type="checkbox"/>	Asset recon		Fixed asset recon		BIC	<div><div></div><div></div><div></div><div></div></div>

10

25

50

100

250

Page 1 of 1 (2 items)

DASHBOARDS/SCREENS

Reports



Asamco Asamco
Local Debug

Dashboard

Assets

Depreciation batches

Import

Master data

Reporting

Dashboard

Reports

Datareaders

Datasources

Reports

Notifications

Reporting settings

FTP Servers

Ticket

Generic auditing

Settings

Reports

Manage categories

Checkup

Select actions

Import reports

Name

Description

Datasource

Category

Type

Q

Q

Q

Q

(All)

Fixed asset listing

Fixed asset listing

Fixed asset listing

Asset

BIC

Asset recon

Fixed asset recon

BIC

10

25

50

100

250

Page 1 of 1 (2 items)

1

DASHBOARDS/SCREENS

Ticket

Asamco Asamco

Local Debug

Assets

Depreciation batches

Import

Master data

Reporting

Ticket

Tickets

Management

Ticket types

Checklists

Forms

Generic auditing

Settings

Fixed assets settings

External integrations

User defined fields

Information

Workflow management

Workflows

Workflow steps

UserManagement

Ticket #1

New

Subject

Is this item second-hand?

Ticket type

Question

Due date

2024 Jul 19 10:28

Priority

Low

Agent / Group

User Group Administrators

Ticket date

2024 Jul 19 10:29

Last update

2024 Jul 19 10:29

Reporter

Asamco Asamco

Notes

Size

Font

B I S U

Normal text

A°

This is a demo question

Ticket fields

Contacted the supplier

☐

Documents

Drop files to the page or click here to select

Search...

No data

Page 1 of 1 (0 items)

Comments

There are no comments yet on this ticket.

Normal text

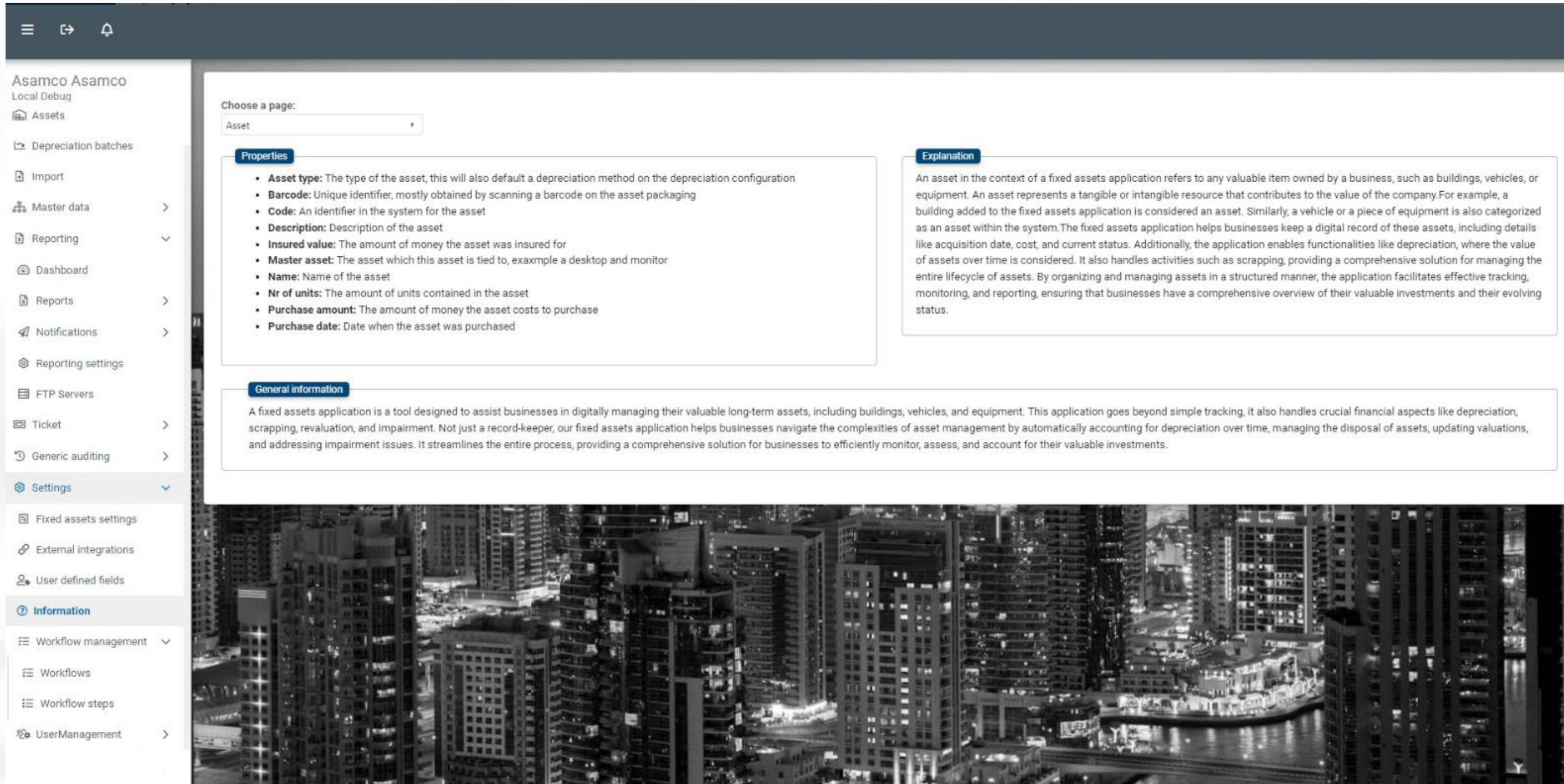
B I S U

Share with customer

Send internally

DASHBOARDS/SCREENS

User Manual



Asamco Asamco
Local Debug

Assets

Depreciation batches

Import

Master data

Reporting

Dashboard

Reports

Notifications

Reporting settings

FTP Servers

Ticket

Generic auditing

Settings

Fixed assets settings

External integrations

User defined fields

Information

Workflow management

Workflows

Workflow steps

UserManagement

Choose a page:

Asset

Properties

- **Asset type:** The type of the asset, this will also default a depreciation method on the depreciation configuration
- **Barcode:** Unique identifier, mostly obtained by scanning a barcode on the asset packaging
- **Code:** An identifier in the system for the asset
- **Description:** Description of the asset
- **Insured value:** The amount of money the asset was insured for
- **Master asset:** The asset which this asset is tied to, exaxmple a desktop and monitor
- **Name:** Name of the asset
- **Nr of units:** The amount of units contained in the asset
- **Purchase amount:** The amount of money the asset costs to purchase
- **Purchase date:** Date when the asset was purchased

Explanation

An asset in the context of a fixed assets application refers to any valuable item owned by a business, such as buildings, vehicles, or equipment. An asset represents a tangible or intangible resource that contributes to the value of the company. For example, a building added to the fixed assets application is considered an asset. Similarly, a vehicle or a piece of equipment is also categorized as an asset within the system. The fixed assets application helps businesses keep a digital record of these assets, including details like acquisition date, cost, and current status. Additionally, the application enables functionalities like depreciation, where the value of assets over time is considered. It also handles activities such as scrapping, providing a comprehensive solution for managing the entire lifecycle of assets. By organizing and managing assets in a structured manner, the application facilitates effective tracking, monitoring, and reporting, ensuring that businesses have a comprehensive overview of their valuable investments and their evolving status.

General information

A fixed assets application is a tool designed to assist businesses in digitally managing their valuable long-term assets, including buildings, vehicles, and equipment. This application goes beyond simple tracking, it also handles crucial financial aspects like depreciation, scrapping, revaluation, and impairment. Not just a record-keeper, our fixed assets application helps businesses navigate the complexities of asset management by automatically accounting for depreciation over time, managing the disposal of assets, updating valuations, and addressing impairment issues. It streamlines the entire process, providing a comprehensive solution for businesses to efficiently monitor, assess, and account for their valuable investments.

CONTACT US

For further enquiries
or to book a demo



+263 772 334 181



+263 867 721 2021



www.compusoft.co.zw



enquiries@compusoft.co.zw



14 St Aubins Close, Chisipite, Harare, Zimbabwe

